

1. How to run PyCharm pro with an educational license:

- To access the pro version of PyCharm, get a free educational license at <https://www.jetbrains.com/shop/eform/students>

(after applying for the educational license, you will get an email with a link to proceed)

***!Note:** To properly work in/with PyCharm it is best to follow skip to the steps in section 2 from here. Alternatively, these are the absolute basics:*

- Once you have the educational license you activate it by running this line in the cluster terminal:

```
module load pycharm/pro/2023.1
```

- Followed by the command to run PyCharm:

```
pycharm
```

- When PyCharm starts running it will ask for the license.

2. How to run a Jupyter Notebook in PyCharm pro:

- In terminal activate a CPU or GPU e.g.:

CPU:

```
qsub -I -l walltime=72:00:00,mem=12gb
```

GPU (this is a single line! Just a space between -l and nodes=):

```
qsub -I -l  
nodes=1:gpus=1,feature=cuda,walltime=72:00:00,mem=19gb,reqattr=cudacap>=5.0
```

- Load anaconda:

```
module load anaconda3
```

- Create a python environment (e.g. an environment called 'charm_env'):

```
conda create --name charm_env python=3.10
```

- Activate environment:

```
source activate charm_env
```

- Load PyCharm pro:

```
module load pycharm/pro/2022.2.3
```

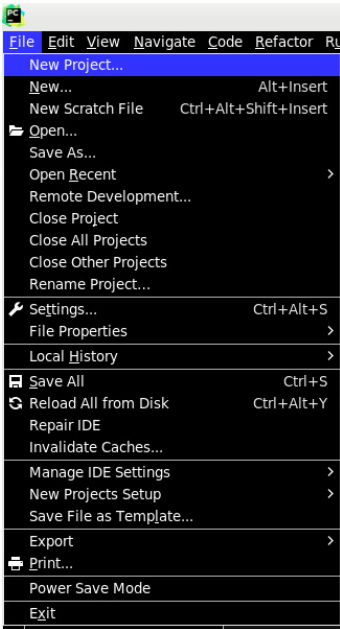
- Run PyCharm:

```
pycharm
```

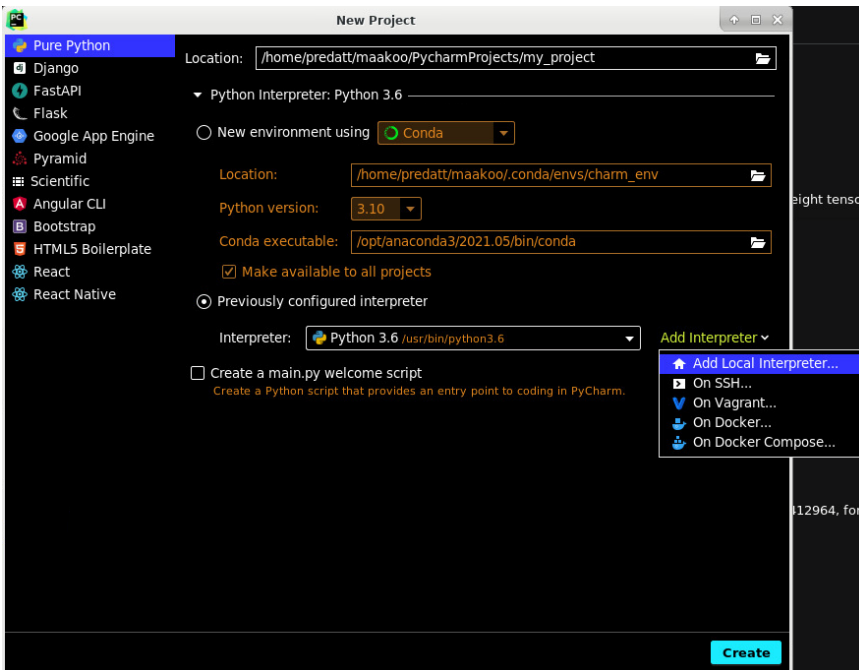
- If you have not activated you educational license yet, it will ask for the license when PyCharm start running

In PyCharm:

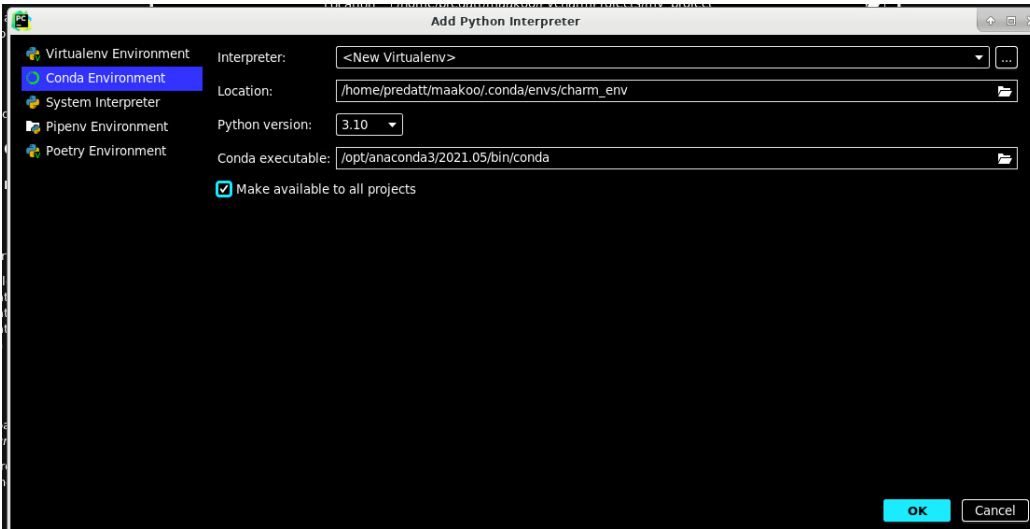
- Create a new project:



- Add your environment as previously configured local interpreter:



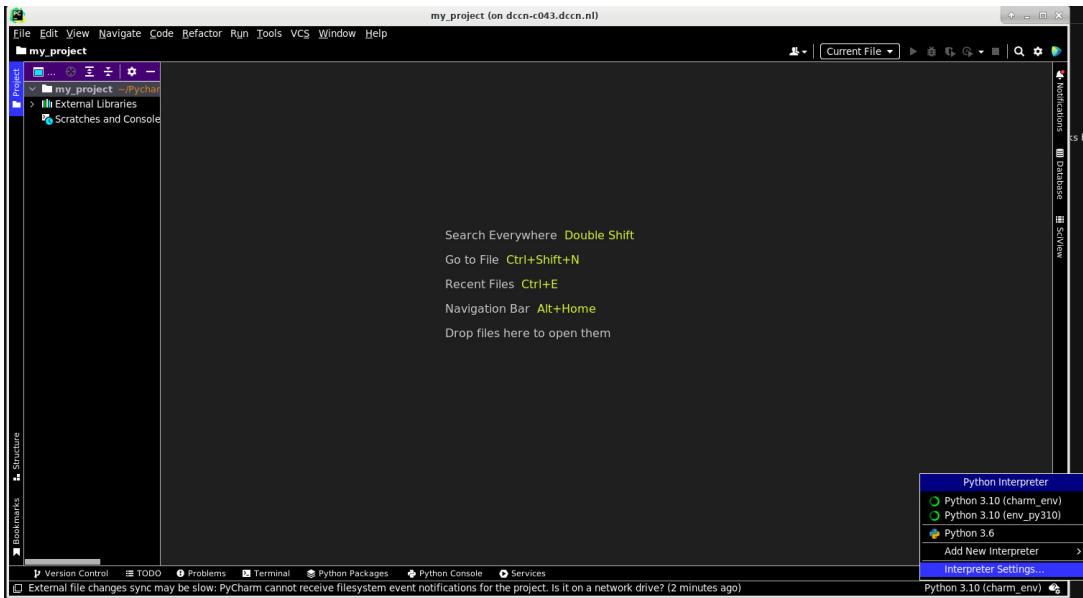
- Click *Conda Environment* and change *Location* to the environment location:



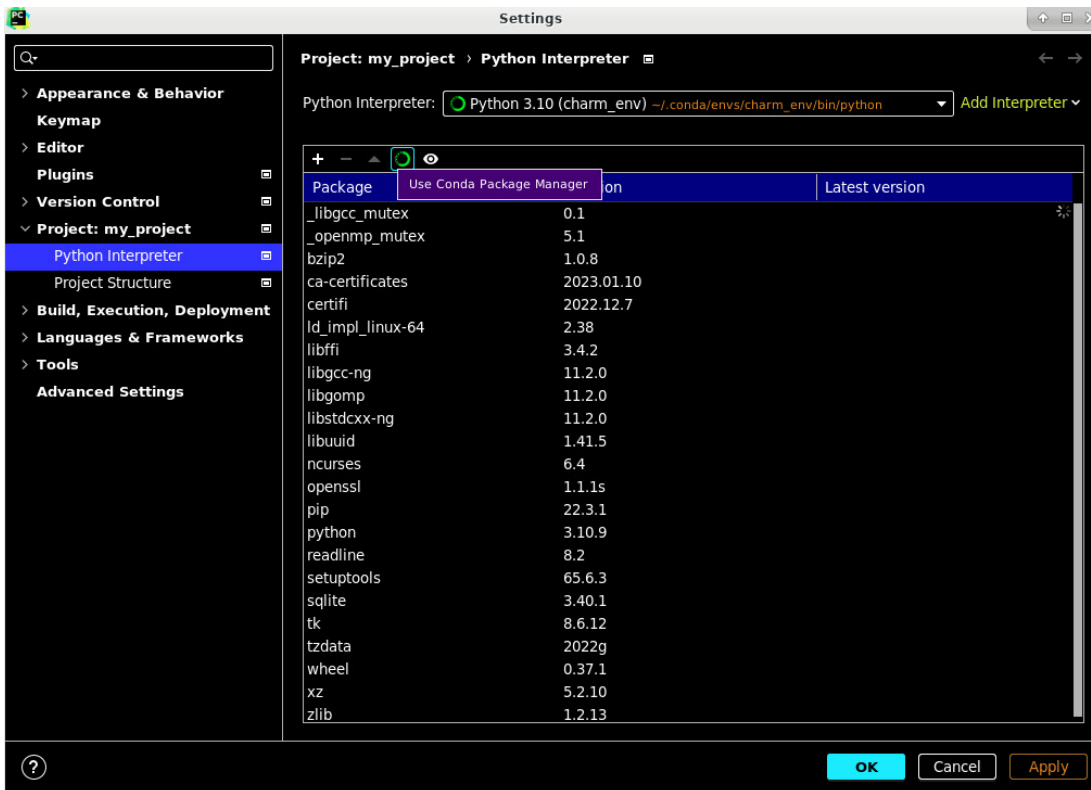
- Click *OK*, then make sure the interpreter is set to the interpreter you just added, and click *Create*:



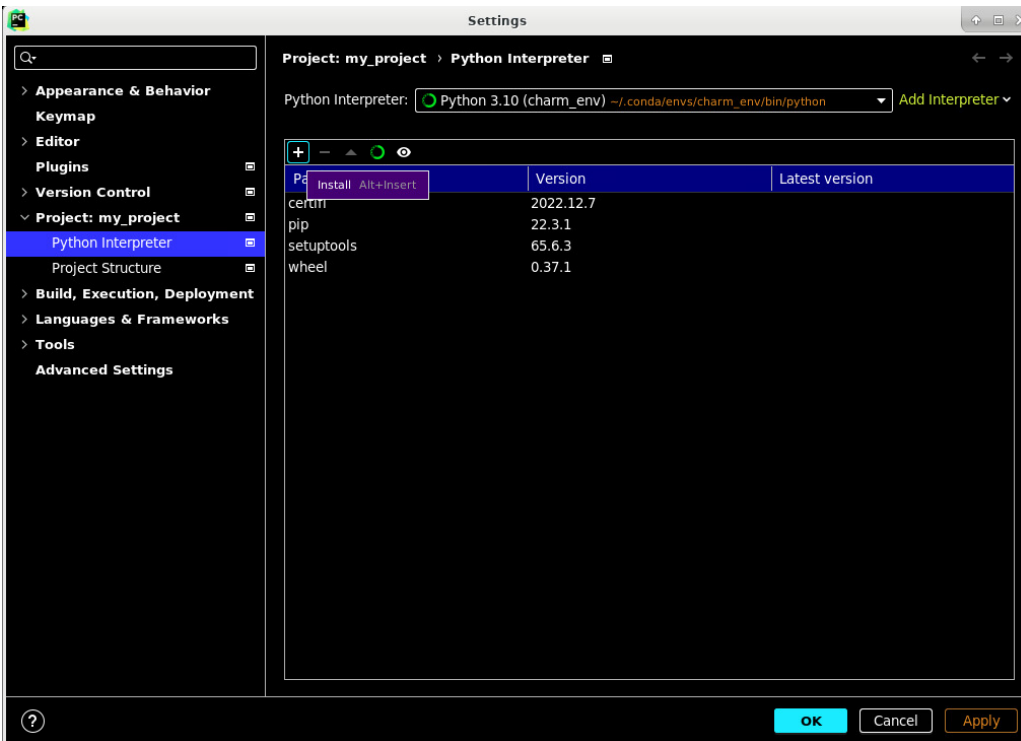
- Go to interpreter settings:



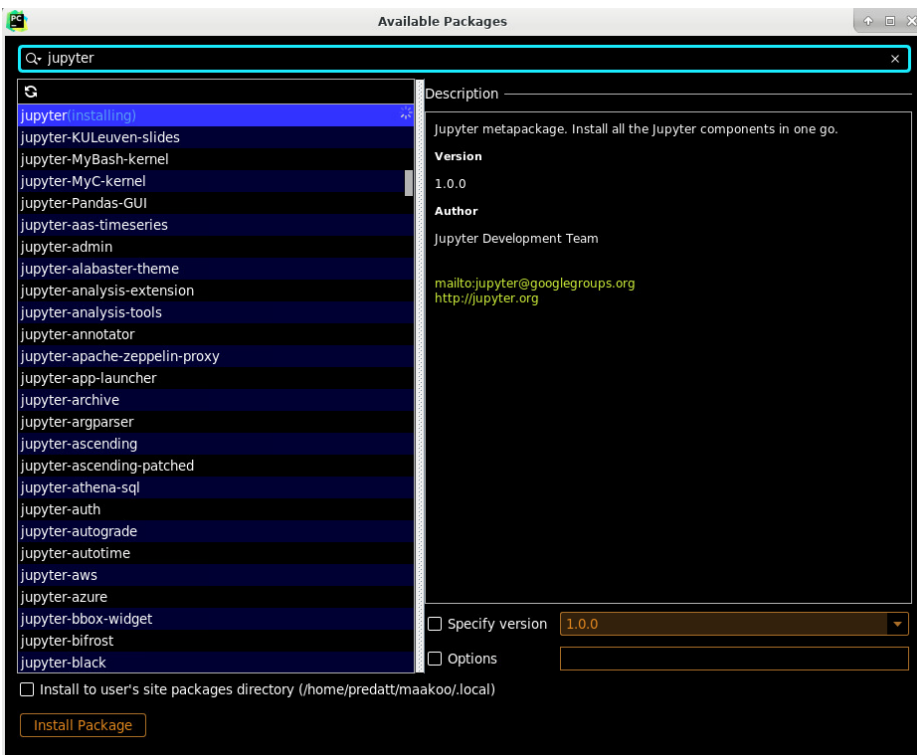
- Click the Anaconda icon to 'Use Conda Package Manager'



- click the + icon to install packages in your environment:

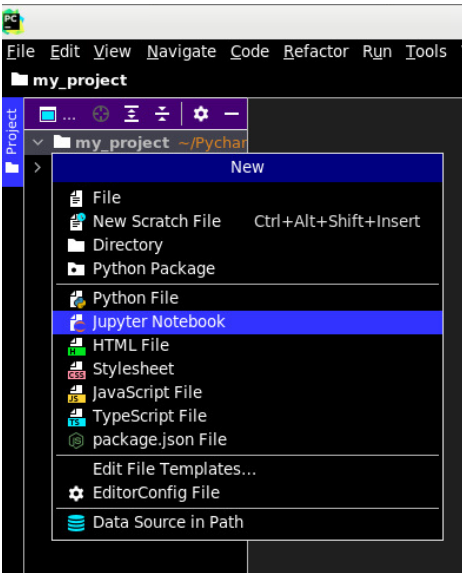
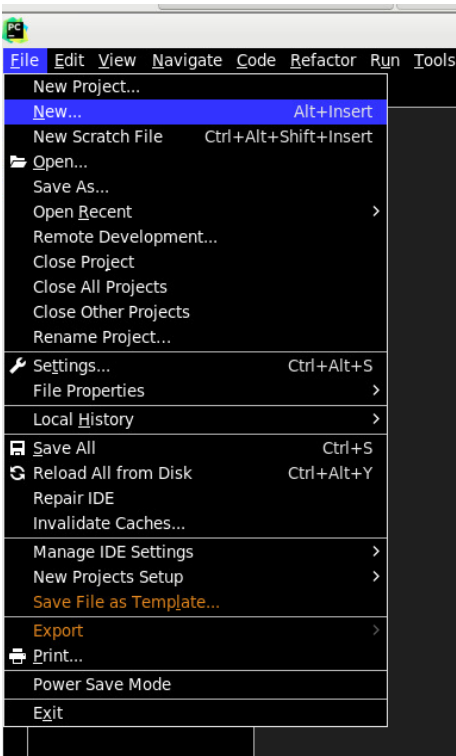


- Install *Jupyter* (and any other package that is needed. For this example that would be *numpy* and *matplotlib*).



- This packages window and the settings window can be closed once you've clicked *Install Package* for each of the packages you need. Installing will continue in the background (you see the progress at the bottom bar of the main PyCharm window).

- Create a new file and get to work (in this case a Jupyter Notebook file):



- For example:

